

Pre-K3/4, Extended Learning Session (ELS), Hang Time, and Sounds of Summer (SOS) programs

Pre-K3/4 and SOS students are not required to wear school uniforms. It is important for students to wear clean, comfortable, and modest clothing that is weather appropriate and suitable for their learning environment. The following information is provided to help parents/guardians and staff maintain a healthy and safe learning environment that reflects FBA's Kingdom Education vision.

General Guidance

- FBA students participating in ELS or Hang Time must wear their school uniforms and abide by all school uniform policies during the traditional school year schedule.
- **SOS** Students are expected to dress in a neat, well-groomed and modest fashion.
- Shirts with spaghetti straps, halter tops, short tops where the abdomen shows (midriff /crop top) are not allowed.
- Shorts must be no shorter than mid-thigh. *Please see photo examples for minimum length.



- Girls may wear modest skirts/dresses with underdress shorts that do not extend below the hemline. These underdress shorts are especially important in maintaining modesty while the children are playing.
- Optional footed tights or leggings may be worn with the skirt/dress. Leggings will not be worn as an outer garment.
- T-shirts or patches with controversial references or inappropriate images are not permitted.
- Non-marking tennis shoes, with socks, will be worn during activities. Boots, sandals, flip-flops and Crocs-style shoes are not allowed.
- Students may bring sandals/flip-flops to change into for Splash Day. Students may wear other types of shoes/boots on special "Spirit" dress-up days like Western Day. Students with medical waivers will be allowed to wear prescribed types of shoes as recommended by their doctors. Waivers should be provided to the school nurse or the Director.

	<ul style="list-style-type: none"> • Modest one-piece swimsuits/tankinis for girls and swim trunks for boys may be worn on Splash Days. If there is any doubt concerning the modesty of the girl's swimsuit, please send a t-shirt to be worn over suit. • K5 – 7th Grade students may wear PE clothes or school approved spirit wear on Parent Conference Days. • Holiday dress code (when ELS is open and there is no school): students may wear comfortable, modest clothes (ex: school approved spirit wear or something similar). Non-marking tennis shoes and socks only. • Students are expected to use the restroom facilities without the aid of a faculty member. Remember, it is difficult for early education children to unbuckle belts, overall straps and other unique styles of clothing fasteners so please plan to dress your student in clothing that is easy to manage during restroom breaks. • Students must have a change of clothing stored at school in case of accidents. Please have these items clearly marked with the child's first and last name. ELS students will have two sets of clothes stored at school. • FBA is not responsible for lost or damaged clothing, backpacks, or personal items. We recommend student's items be marked with their first and last name on the inside of the garment for identification purposes.
--	---

Outside Recess

	<ul style="list-style-type: none"> • Please send your student to school with attire that is appropriate for outside play. Their clothing should provide protection from cold/hot temperatures as children will participate in recess as long as the wind chill factor remains above 32°F and the heat index does not exceed 100°F. Outside recess will not be conducted if the playgrounds are wet or if it's raining. • Please contact the teacher and school nurse if your child has asthma or other health conditions which would limit your student's participation in outside recess. FBA monitors several weather stations for updates on weather conditions throughout the school day.
--	---

SOS Field Trips

	<ul style="list-style-type: none"> • Students will be required to wear an SOS t-shirt on field trip days (1st-8th grades only). T-shirts can be purchased at the SOS desk. Special instructions regarding appropriate clothing for unique field trips will be sent to parents/guardians in advance.
--	--

Hair and Grooming Standards

- | | |
|--|---|
| | <ul style="list-style-type: none">• SOS Boy's hair must be a natural color, kept clean, neat, above the neckline and well groomed. Faddish hairstyles are discouraged (i.e. tails, buns, spikes, weaves longer than 2 ½ inches in length/bulk, mohawks, fauxhawks, mullets, designs cut into hair with the exception of 1 straight line on either side of the head to distinguish a natural part, etc.)• PreK-3/4 Boy's hair must be a natural color, kept clean, neat, and well groomed. Hair will not touch the eyebrows or cover the eyes or face. It will not extend past the middle of the ear on the sides and will not be longer than the bottom of the shirt collar or top of the t-shirt collar in the back. Hair will be no thicker than 2 ½ inches in bulk/thickness at any point. Hair styles should not be distracting in the educational environment. For this reason, faddish hairstyles and styles that require excessive amounts of gels/styling aids are not permitted (i.e. tails, buns, spikes, weaves longer than 2 ½ inches in length/bulk, mohawks, |
|--|---|

fauxhawks, mullets, hair extensions, designs cut into hair with the exception of 1 straight line on either side of the head to distinguish a natural part, etc.) *See **examples** and photos of some styles that fit within these guidelines and some that are not in compliance.

- Acceptable examples:



- Unacceptable examples:



- Girl's hair must be kept clean, neat and well groomed. Hair must be a natural color and the maximum length of the hair, **when styled**, cannot extend beyond the tailbone in the back and cannot cover the eyes or face. Hair extensions may be worn as long as they match the hair color and are within the maximum length requirement when styled. Hair styles should not be distracting in the educational environment. For this reason, faddish hairstyles and styles that require excessive amounts of gels/styling aids are not permitted (i.e. designs cut into the hairline, extremely short, shaved sides, or fades that resemble short male styles.) *See **Examples**



● Acceptable Examples:



● Unacceptable Examples: (example #5 has pink highlights/#6 hair hangs in front of the eyes)



* **Exceptions:** Wigs, unique styles and optional hair devices or styles may be permitted for medical or religious reasons. These will be reviewed and approved by the administration team on a case-by-case basis.

Hair Items

- Boys will not wear items in their hair. ***See Note**
 - Girls may wear small, simple bows, barrettes, clips, or unadorned (plain) headbands that are not distracting. ***See Note**
- * **Note:** Bandannas, ornamentation and scarves are not permitted except on Spirit Days, Rallies, or other designated theme days with the approval of administration team.

Tattoos

- Body tattoos/body art is prohibited. Semi-permanent transfers may be permitted on Spirit Days, Rallies, or other designated theme days with the approval of the administration team.

Piercings

- Girls are allowed to wear one set of small earrings, no larger than the size of a nickel, in the lobe of the ear. ***See Note**
 - Boys are not allowed to wear earrings of any kind. ***See Note**
 - Ear gauging, nose, tongue, body, and lip piercings are not permitted. Simply covering the piercing with a band aid or wearing a clear device is not allowed as an alternative to removal of the jewelry.
- ***Note:** Students may wear additional jewelry items on Spirit Days, Rallies, or other designated theme days as part of their costume, as long as, the jewelry does not distract from the academic environment.

Jewelry

- One small gold or silver neck chain, bracelet, ring, and a watch is acceptable. Students will be required to remove any jewelry that does not conform to this dress code. ***See Note**

	<p>* Note: Students may wear additional jewelry items on Spirit Days, Rallies, or other designated theme days as part of their costume as long as they do not distract from the academic environment.</p> <p>*Note: Smartwatches must be in “Airplane” mode during the school day.</p>
Makeup	<ul style="list-style-type: none"> • Makeup is not allowed.
Backpacks	
	<ul style="list-style-type: none"> • Backpacks are important tools for transporting books and materials to/from school and class. Backpacks should be large enough to allow for “Red Folders” in Pre-K and to carry a reasonable amount of items on campus. • Oversized backpacks and camping-style backpacks and roller-bags are not authorized as they do not fit into bins. *See Exception • Small individual accessories may be clipped to/pinned on bags as long as they remain on the bag during the school day. • * Exception: Roller-bags may be used if the student has submitted an approved medical waiver that prohibits lifting/carrying to the school nurse.

Dress and Personal Appearance Code (K5-12th Grades)


Note: For specific guidance on proper clothing/uniform wear and personal appearance standards during **ELS, Hang Time** and **SOS** please consult the Early Education & Child Care Department Parent/Student Handbook.

Students, K5-12th Grade, are required to wear school uniforms and maintain established grooming standards during the school day and during school events. Uniforms serve as an economy measure for our families. Uniforms are also designed to bring dignity to the wearer, reflect a God-honoring culture and encourage enhanced school spirit. FBA promotes unity and spiritual emphasis by encouraging a focus on developing Christ-like characteristics and minimizing competition based on outward appearances.

FBA’s approved uniform vendor is Lands’ End. Uniform items should be purchased through their website at www.landsend.com. ***See Note**

***Note:** There are times when items may be on backorder. If this occurs, please provide a copy of the status of the backorder from Land’s End to the administration team with a projected date that the item may be received. This information will be noted in the student’s file in Praxi to avoid demerits until the item is received. In some cases, the administration team may recommend a suitable substitute for an item if it appears there will be an extended wait. New students will be given a one-month grace period to receive their new uniform items. This period may be extended on a case-by-case basis with approval of the administration team. New students may wear current Spirit Shirts, as an option, or plain white, red or navy polo with navy/khaki skirts/trousers, until their uniform items arrive.

The following information is provided to help students, parents/guardians, and staff maintain a healthy and safe learning environment that reflects FBA’s Kingdom Education vision.

<p><i>General Guidance</i></p>	
<p>General Guidance</p>	<ul style="list-style-type: none"> • Kindergarten students are expected to use the restroom facilities without the aid of a faculty member. Kindergarten students must have a change of clothing stored at school in case of accidents. Please have these items clearly marked with the child’s first and last name. • T-shirts or patches, if worn as a part of a “Spirit Day/Fun Day” must not have controversial references or inappropriate images. • Leggings, if used as part of a “Spirit Day/Fun Day” costume must be covered by a skirt or shorts that comply with FBA’s skirt length policy. • Flip flops, sandals, Crocs-style shoes, and boots of any kind are NOT permitted. *Exceptions must be approved by the administration team. • Student’s Dress Code violation demerits will be documented in Praxi under the area of Responsibility. • Refer to the Athletic Handbook for authorized sports team uniforms/shoes/socks. • FBA is not responsible for lost or damaged clothing, backpacks, or personal items. We recommend student’s items be marked with their first and last name on the inside of the garment for identification purposes. • Elementary School Chapel is normally held on Wednesday mornings. Students will wear white long/short sleeved polo shirts with logos on Chapel days. Shirt will be worn tucked in and the bottom polo button will be buttoned. Girls will wear the plaid skirt or plaid jumper (with logo), or the knee-length skort with black or navy underdress shorts that do not extend below the hemline of the skirt or jumper. Boys will wear navy or khaki pants with a belt (No Shorts). • Middle/High School Chapel is normally held on Tuesday mornings. Students will wear white long/short sleeved polo shirts (tucked in) with logos on Chapel days. Girls will wear the plaid skirt with optional black or navy underdress shorts that do not extend below the hemline of the skirt. Shirt will be worn tucked in and the bottom polo button will be buttoned. Plaid skirt will be no shorter than 2 inches above the top of the knee cap and no longer than 2 inches below the bottom of the knee cap. Boys will wear navy or khaki pants with a belt. (No Shorts) Students will wear appropriate uniform shoes. (See information below)
<p><i>Uniform (Girls K5-5th Grade)</i></p>	
	<ul style="list-style-type: none"> • Option 1: White, navy or red long or short sleeved polo shirt (with logo) and plaid skirt with black or navy underdress shorts that do not extend below the hemline of the skirt. The bottom button of the polo will be buttoned and the shirt will be tucked in. Plaid skirt will be no shorter than 2 inches above the top of the knee cap and no longer than 2 inches below the bottom of the knee cap. *See Note 

- Option 2: Plaid jumper (with logo), black or navy underdress shorts that do not extend below the hemline and either a long or short sleeved white, navy or red polo shirt (with or without logo) or a white Peter Pan shirt without a logo.
 - Option 3: White, navy or red long or short sleeved polo shirt (with logo) and new style knee-length skort. The bottom button of the polo will be buttoned and the shirt will be tucked in. **(Note: Old style shorter skorts are no longer allowed.)**
 - Undershirts (e.g., white or nude) may be worn under the shirt and be tucked in. The sleeves must not extend beyond the hem of the shirt sleeves.
 - Optional: solid navy or white footed tights or leggings may be worn with the knit skirt/jumperknee-length skort.
 - Low-top, black, white or black and white combination non-marking tennis shoes with color-coordinated solid black or white socks. Laces will match primary color of the shoes. Shoes will not have patterns, sparkles, or decorations. They may have a small logo.
- **See examples of shoes that meet/fail to meet specifications.
**Acceptable examples:



**Unacceptable examples:



Uniform (Boys K5-5th Grade)

- Option 1: White, navy or red long or short sleeved polo (with logo) with navy or khaki pants with a belt. Pant length should extend to the top of the shoes and be no shorter than 2 inches above top of the shoe. Polo shirt must be long enough to remain tucked in. Bottom button will be buttoned. White undershirt, if worn, will be tucked in and sleeves will not extend beyond the polo sleeve hem.
- Option 2: White, navy or red short or long sleeved polo (with logo) with navy or khaki shorts with a belt. Short length should be no shorter than 2 inches above the knee and no longer than the bottom of the knee. Polo shirt must be long enough to remain tucked in. Bottom button will be buttoned. White undershirt, if worn, will be tucked in and sleeves will not extend beyond the polo sleeve hem.

- Low-top, black, white or black and white combination non-marking tennis shoes with color-coordinated solid black or white socks. Laces will match primary color of the shoes. Shoes will not have patterns, sparkles, or decorations. They may have a small logo. **See examples of shoes that meet/fail to meet specifications below.

**Acceptable examples:



**Unacceptable examples:



- Leather, black or brown belt.
- Optional: Boy's cardigan sweater or fleece quarter zip pullover with logo.

Uniform (Girls Middle/High School)

- Option 1: White, navy or red, long or short sleeved polo shirt (with logo) and plaid skirt with optional black or navy underdress shorts that do not extend below the hemline of the skirt. Shirt will be worn tucked in and the bottom polo button will be buttoned. Undershirts (e.g., white or nude) may be worn under the shirt. They must be tucked in and may not extend below the hem of the shirt at the sleeves. Plaid skirt will be no shorter than 2 inches above the top of the knee cap and no longer than 2 inches below the bottom of the knee cap. ***See Note**
- Option 2: White, navy or red, long or short sleeved polo shirt (with logo) with navy or khaki pants with a belt. Pant length should extend to the top of the shoes and be no shorter than 2 inches above top of the shoe. Shirt will be worn tucked in and bottom polo button will be buttoned. Undershirts (e.g., white or nude) may be worn under the shirt but must be tucked in and may not extend below the hem of the shirt at the sleeves.
- **Middle School** girls are allowed to substitute navy or khaki shorts and belt for pants except on chapel days. Short length should be no shorter than 2 inches above the knee cap and no longer than the bottom of the knee cap.
- Optional solid navy or white footed tights or leggings may be worn with the knit skirt.
- **Middle School:** Low-top, black, white or black and white combination non-marking tennis shoes with color-coordinated solid black or white socks. Laces will match primary color of



the shoes. Shoes will not have patterns, sparkles, or decorations. They may have a small logo.

**See examples of shoes that meet/fail to meet specifications below.

**Acceptable Examples:



** Unacceptable Examples:



- **High School:** Solid brown or black leather (including heel) closed-toe, dress shoes, with a flat heel of no greater than 1 inch, with navy, black or white footed tights or cable knee socks. Suede shoes are not authorized.
- Non-marking tennis shoes and athletic socks must be worn during P.E. classes.
- Students will not wear boots, high top tennis shoes, flip flops, sandals or Crocks-style shoes. ****See Exceptions**

* **Note:** Middle School girls have the option of wearing solid brown or black leather closed-toe dress shoes with a flat heel of no greater than 1 inch with navy, black or white footed tights or cable knee socks with their skirt. Suede shoes are not authorized.

****Exceptions** to the shoe policy will be approved on a case-by-case basis for verified medical waivers.

Uniform (Boys Middle/High School)

- White, navy or red, long or short sleeved polo (with logo) with navy or khaki pants with a belt. Pant length should extend to the top of the shoes and be no shorter than 2 inches above top of the shoe. Polo shirt must be long enough to remain tucked in. Bottom button will be buttoned. White undershirt, if worn, will be tucked in and sleeves will not extend beyond the polo sleeve hem.
- **Middle School** boys are allowed to substitute navy or khaki shorts and belt for pants except on chapel days. Short length should be no shorter than 2 inches above the knee cap and no longer than the bottom of the knee cap.
- **Middle School** boys wear low-top, black, white or black and white combination non-marking tennis shoes with color-coordinated solid navy, black or white socks. Laces will

match primary color of the shoes. Shoes will not have patterns, sparkles, or decorations. They may have a small logo. **See examples of shoes that meet/fail to meet specifications.

*Acceptable examples:



*Unacceptable examples:



- **High School:** Solid brown or black leather (including heel) closed-toe, dress shoes with navy, black, brown or white socks. Suede shoes are not authorized. **See Exceptions
- Non-marking tennis shoes and athletic socks must be worn during P.E. classes.
- Students will not wear boots, high top tennis shoes, flip-flops, sandals or Crocks-style shoes. *See Exception
- Leather, black or brown belt. The leather belt and leather shoe color will match.
- Refer to the Athletic Handbook for proper shoes/sock types on sports teams.
- Students must wear approved uniform shoes when in the main academic building and during ELS/Hang Time. Other styles of shoes may be allowed for use during athletic practices and games at the discretion of the Athletic Director and coaches but they must be changed before the student returns to the main building.

***Exceptions** to the shoe policy will be approved on a case-by-case basis for verified medical waivers.


Other Uniforms

- Scout and AWANA uniforms are permitted in their entirety on meeting days. Scout pins may be worn on school uniforms.


Miscellaneous Items

Outerwear

- Students are permitted to wear a jacket or coat of no particular style or color to and from school, however, ONLY “school” letterman jackets or approved Lands’ End jackets and sweaters with logos or FBA hoodies are to be worn inside school buildings. Lands’ End Uniform sweaters include SOLID red or navy blue cardigan sweaters and pullover sweaters (with logos).
- Students may also purchase and wear optional navy blue blazer or rain jackets (with logos) from Lands’ End.
- Only letter jackets, sweatshirts, vests or hoodies purchased from FBA or FBA’s contract

	<p>uniform store are permitted for wear during school.</p> <ul style="list-style-type: none"> • Sweatshirts and hoodies will not be worn or brought to Chapel unless the administration team decides the indoor temperature warrants an exception. • Hoodie/jacket hoods will be worn with the hood down when students are indoors. • TAPPS or other school-sponsored activity shirts/jackets/hoodies are allowed on spirit days only. • Letter Jackets must have the student’s “House Patch” centered under their name on the right front side of the jacket. 
Purses/Handbags	<ul style="list-style-type: none"> • K5 – 3rd Grade: Not allowed • 4th – 12th Grade: Purses must be kept in lockers, or stored on the floor below the student’s desk, except at lunch time or when it is necessary to transition to/from class, at lunch and during breaks.
Backpacks	<ul style="list-style-type: none"> • Backpacks are important tools for transporting books and materials to/from school and class. Backpacks should be large enough to allow for “Red Folders” in Elementary School and to carry a reasonable amount of items on campus. • Oversized backpacks and camping-style backpacks and roller-bags are not authorized as they do not fit into lockers/bins. *See Exception • Small individual accessories may be clipped to/pinned on bags as long as they remain on the bag during the school day. <p>* Exception: Roller-bags may be used if the student has submitted an approved medical waiver that prohibits lifting/carrying to the school nurse.</p>
Belts	<ul style="list-style-type: none"> • Belts will be worn with all uniform pants and shorts. Belts will be black or brown leather. High school students must match the color of their belt to their leather shoes. • Belts are not required with jeans on spirit or house days.
<i>Clothing for special days/circumstances</i>	
Outside Recess	<ul style="list-style-type: none"> • Please send your student to school with attire that is appropriate for outside play. Their clothing should provide protection from cold/hot temperatures as children will participate in recess as long as the wind chill factor remains above 32°F and the heat index does not exceed 100°F. Outside recess will not be conducted if the playgrounds are wet or if it’s raining. • Please contact the teacher and school nurse if your child has asthma or other health conditions which would limit your student's participation in outside recess. FBA monitors several weather stations for updates on weather conditions throughout the school day.
Field Trips	<ul style="list-style-type: none"> • Students will be required to wear clean, neat, blue or black jeans (faded jeans and jeans

	with holes/rips are not allowed), a current FBA spirit shirt, tennis shoes and socks on field trip days (K5-8th grades only). Special instructions regarding appropriate clothing for unique field trips will be sent to parents/guardians in advance.
FBA Sponsored Activities (Field Trip Chaperones)	<ul style="list-style-type: none"> • We request all participants (students, teachers, family members, friends, chaperones...) who attend FBA sponsored activities to dress appropriately and remember that we represent our Lord at all times. Student dress standards are outlined in the preceding paragraph of this Dress and Personal Appearance Code section. The following information pertains to chaperones and all others participating in the event. • Shorts: In FBA Sponsored activities where shorts are allowed (a rare exception), shorts must be modest (not too tight) and not be shorter than 2 inches above the knee cap/athletic length (like PE uniform shorts). • Tops: In FBA Sponsored activities where tops other than uniform/Spirit wear are allowed (a rare exception), no see through (where undergarments show), spaghetti strap, or tank tops. • Skirts: In FBA Sponsored activities where skirts are allowed, skirts cannot be shorter than 2 inches above BACK of the knee. • Jeans: In FBA Sponsored activities where jeans are allowed, jeans must not be too tight, have holes/rips, or be baggy. • Disclaimer: FBA Administration reserves the right to adjust attire requirements, following the lead of the Holy Spirit, based on the particular situation.
Spirit Days	<ul style="list-style-type: none"> • K5-5th Grade: Students may wear spirit wear with uniform skirts/pants. • FBA students have the privilege of wearing clean, neat blue or black jeans (faded jeans and jeans with holes/rips are not allowed) with a FBA spirit shirt, non-marking tennis shoes and socks every Friday. If a student does not have a spirit shirt, the normal school uniform must be worn. Spirit shirts can be purchased at the school office. *Note • Middle School students have the option of wearing their navy or khaki shorts. • Middle School/High School students have the option of wearing black or brown leather school shoes. • TAPPS or other school-sponsored activity shirts/jackets/hoodies are allowed. <p>* Note: Students may wear their choice of non-marking tennis shoes on Spirit Days/Fun Days. Other types/styles of shoes are not allowed unless approved by the administration team.</p>
House Monday Uniform	<ul style="list-style-type: none"> • High School: House students have the privilege of wearing clean, neat, blue or black jeans (faded jeans and jeans with holes/rips are not allowed) with their formal House t-shirt or polo and non-marking tennis shoes on Mondays. Students who choose not to wear their House t-shirt or polo must wear their normal school uniform. Outerwear for that day must be FBA approved, e.g., sweaters, letter jackets, sweatshirts, etc.
House Fun Day/Spirit Week	<ul style="list-style-type: none"> • House Fun Day and Spirit Day costumes must adhere to the same modesty standards outlined in the uniform and spirit guidelines. Students will wear items appropriate to their gender and costumes must not be a distraction to or hinder the academic process.

<p>House Rally</p>	<ul style="list-style-type: none"> • Students will wear FBA House or Spirit Shirts with jeans or FBA PE athletic shorts (red or blue) with at least a 5 inch inseam length. No other shorts/t-shirts will be allowed. Girls may wear biker shorts under their athletic shorts. Spirit shirts and athletic shorts can be purchased in the school office. • PE shorts can be purchased online through the school store. • Modest one-piece swimsuits/tankinis for girls and swim trunks for boys will be worn if going to the pool. If there is any doubt concerning the modesty of the swimsuit the staff will advise the wear of a t-shirt over the suit.
<p>House Sponsored Events: Christmas Banquet/Spring Formal</p>	<ul style="list-style-type: none"> • Modest, conservative dress appropriate for each event is required of all who attend, including outside guests of FBA High School students, who do not attend FBA. Dress on all occasions should be such as to uplift each other, our school, our sponsoring church and our Lord. • Ladies' dress length can be no shorter than the top of the knee cap. • Spaghetti or shoulder straps are permitted. • No stomach or cleavage showing. (See-through fabric is not an acceptable alternative that permits exposure of these areas) • No high slits (higher than mid-thigh). • No low back line below the middle of the back. *See examples and photos of some styles that fit within these guidelines and some that are not in compliance. • Exceptions to nail colors/design may be requested prior to the spring social from the school principal. If an exception is approved the nails may be modified not earlier than one week prior to the social and they must be returned to normal colors/styles not later than one week following the social. • Acceptable Examples: <ul style="list-style-type: none">  • Unacceptable Examples:



P.E. Uniforms

- **K5-5th Grade** students are required to wear P.E. uniforms purchased through the school office or at the Parent Auxiliary uniform sale. Non-marking tennis shoes and athletic socks must be worn during P.E. classes. November through March are considered cold weather months. During cold weather months, students may wear **plain** navy, red or grey sweatpants and sweatshirts to P.E. Sweats are not sold at FBA, however, they may be purchased at a local store. Sweats may be brought to P.E. class every day during November through March. P.E. teachers have the option of allowing them during other months, if the weather conditions make it necessary. P.E. attire must be marked with the student’s first and last name.
- **Middle School & High School** students are required to purchase PE uniforms from the FBA approved contract uniform store or the Parent Auxiliary uniform sale.

Dress Code Violations

- Students who fail to adhere to the dress code policy as it pertains to school uniforms or personal appearance standards will receive a dress code violation demerit. A student may have several violations in one day. In that case all violations will be noted but only one dress code demerit will be assessed. For example, a student may have the wrong uniform shirt, have the wrong shoes and be in need of a haircut. All three violations will be noted in Praxi but they will only count as one dress code demerit for that day. Dress code demerits will accumulate toward behavioral consequences as any other discipline mark. Students will not be excused from participation because of dress code violations.

Hair and grooming standards

Hair

- Boy’s hair must be a natural color, kept clean, neat, and well groomed. Hair will not touch the eyebrows or cover the eyes or face. It will not extend past the middle of the ear opening on the sides (including sideburns) and will not be longer than the bottom of the uniform collar or top of the t-shirt collar in the back. Hair will be no thicker than 2 ½ inches in bulk/thickness at any point. Hair styles should not be distracting in the educational environment. For this reason, faddish hairstyles and styles that require excessive amounts of gels/styling aids are not permitted (i.e. tails, buns, spikes, weaves longer than 2 ½ inches in length/bulk, mohawks, fauxhawks, mullets, hair extensions, designs cut into hair with the exception of 1 straight line on either side of the head to distinguish a natural part, etc.)
 *See examples and photos of some styles that fit within these guidelines and some that are not in compliance.

• Acceptable examples:

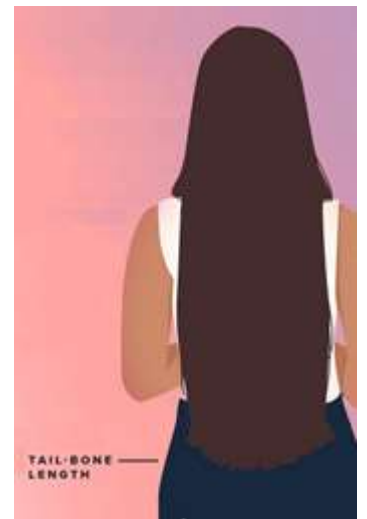


Unacceptable examples:



- Girl's hair must be kept clean, neat and well groomed. Hair must be a natural color and the maximum length of the hair, **when styled**, cannot extend beyond the tailbone in the back and cannot cover the eyes or face. Hair extensions may be worn, as long as, they match the hair color and are within the maximum length requirement when styled. Hair styles should not be distracting in the educational environment. For this reason, faddish hairstyles and styles that require excessive amounts of gels/styling aids are not permitted (i.e. designs cut into the hairline, extremely short, shaved sides, or fades that resemble short male styles.) *See examples and photos of some styles that fit within these guidelines and some that are not in compliance.

****See Exceptions:**



Acceptable Examples:



Unacceptable Examples: (examples #3 & 4 have unnatural colors/highlights)



**** Exceptions:** Wigs, unique styles and optional hair devices or styles may be permitted for medical or religious reasons. These will be reviewed and approved by the administration team, on a case-by-case basis.

Hair Items

- Boys will not wear items in their hair. ***See Note**
 - Girls may wear small, simple bows, barrettes, clips, or unadorned (plain) headbands that are not distracting if they match the school uniform colors of red, white, and navy or are plain gold or silver in color. ***See Note**
- * Note:** Bandannas, ornamentation and scarves are not permitted except on Spirit Days, Rallies, or other designated theme days with the approval of the administration team.

Moustache/Beard;

- All male students must be clean shaven. Moustache and beard hair is not permitted. Sideburns may not extend past the middle of the ear opening and hair on the back of the neck should be trimmed. ***See Exception**
- **Middle School:** There may be times when a Middle School student matures to the point where they need to begin shaving to maintain a clean-shaven appearance. In these instances, the administration team will contact the student’s parents/guardians to work out a plan for compliance. ***See Exception**
- **Exception:** Students with medical conditions that do not allow for a clean-shaven appearance must have an official diagnosis from a medical professional stating the nature of the medical condition and the duration of the treatment before a waiver can be issued.

Tattoos

- Body tattoos/body art is prohibited. Semi-permanent transfers may be permitted on Spirit Days, Rallies, or other designated theme days with the approval of the administration team.

<p>Piercings</p>	<ul style="list-style-type: none"> • Girls are allowed to wear one set of small earrings, no larger than the size of a nickel, in the lobe of the ears. * See Note • Boys are not allowed to wear earrings of any kind. • Ear gauging, nose, tongue, body, and lip piercings are not permitted. Simply covering the piercing with a band aid or wearing a clear device is not allowed as an alternative to removal of the jewelry. <p>* Note: Students may wear additional jewelry items on Spirit Days, Rallies, or other designated theme days, as part of their costume, as long as the jewelry does not distract from the academic environment.</p>
<p>Jewelry</p>	<ul style="list-style-type: none"> • K5 –Middle School: Jewelry must be God-honoring and non-distracting. One small necklace, bracelet/medical ID bracelet, maximum of two rings, and watch is acceptable. Students will be required to remove any jewelry that does not conform to this dress code. Students may also wear plastic bracelets with a Christian message or school-supported theme. *See Notes <p>* Note: Students may wear additional jewelry items on Spirit Days, Rallies, or other designated theme days as part of their costume, as long as, the jewelry does not distract from the academic environment.</p> <p>*Note: High School students may wear no more than 2 rings per hand, 2 bracelets/medical ID bracelet, 1 watch and 1 necklace.</p> <p>*Note: Students may wear Smartwatches/rings at FBA. These devices must be placed in “Airplane” mode during school hours unless the student has approval to use the features for class purposes. Unauthorized use of these smart devices during school will result in demerits and potential fines.</p>
<p>Makeup</p>	<ul style="list-style-type: none"> • K5-5th Grade: No Makeup Allowed • Boys are not allowed to wear makeup. *See Exception • Middle/High School girls are permitted to use a modest amount of makeup. Makeup must be applied lightly such as to not draw attention to the individual. Makeup is never to be applied in the classroom. Clear, light or medium pink lipstick or lip gloss may be worn. (No dark, black, or glittered lipstick, eye shadow, or bright red cheek color allowed.) *See Exception <p>* Exception: Waivers to this policy may be made in the case of medical necessity. These cases will be reviewed/approved by the administration team, on a case-by-case basis.</p>

Nails/Nail Polish

- **K5 – 5th Grade:** Girls (Only) may wear clear, light or medium pink nail polish. Dark colors, black, glittered nail polish, painted or sticker nail designs, ornamentation and fake nails/extensions **are not** allowed.
- **Middle/High School:** Girls (Only) may wear clear, light or medium pink, red, white or French tip nail polish. Dark colors, black, glittered nail polish, painted or sticker nail designs and ornamentation **is not** allowed. Acrylic nails/extensions may be worn as long as they are no longer than ¼ inch beyond the tip of the finger and the tips are round, oval, ballerina or squoval in shape. *See Exceptions

***Exception:** High school girls may request an exception for nail color/styles for the spring social. Request must be approved by the principal. Approved colors/styles may be worn the week before and after the social.

*Acceptable Examples:

